

AUTUMN BREAK HOME WORK

SOCIAL SCIENCE

CLASS : VIIIA and B

(i) On an outline map of the world, show the following:

(a) Two wheat producing countries of Asia

(b) Ukraine area

(c) Prairies

(d) Wheat producing areas in Southern Hemisphere

(e) Two wheat exporting countries.

(ii) On the outline map of the world, show the following:

(a) Two important rice producing countries

(b) Two rice exporting countries

(c) The country in which highest yield per hectare is found

(d) Yangtse valley, Myanmar, Sri Lanka.

(iii) On the outline map of the world, show the following:

(a) Two cotton producing countries

(b) Two cotton exporting countries

(c) Nile Delta

(d) Cotton Belt of U.S.A.

(iv) On the outline map of the world, show the following:

(a) Two important tea producing countries

(b) Coffee producing areas in Asia

(c) A country known as 'Sugar Bowl'

(d) A country known for rubber plantation

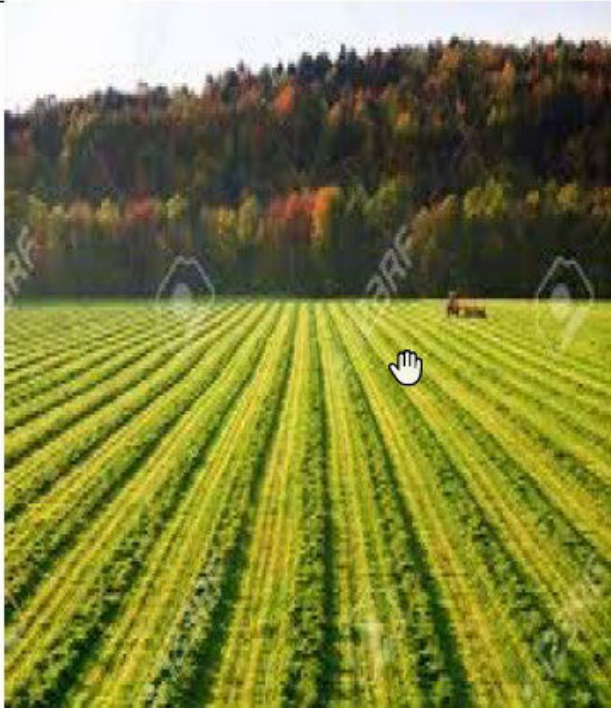


Rice Cultivation with the help of human labour



Mechanised wheat farm

Differentiate between the various types of farming according to geographical conditions, demand of production, labour and level of technology.



A farm in the U.S.A.



A Farm in India

1. Name the chief rice producing nation.
2. Name the main wheat producing countries in the world.
3. Why is rice known as 'labour-intensive' crop?
4. Observe and study the pictures carefully and compare agricultural development in India and the U.S.A. State any four differences.

In the given political outline map of the World, five features a, b, c, d, and e have been shown. Identify countries with these features, with the help of the information given below and write their correct names on the lines drawn near them:

- (a) Maximum production of rice in the world
- (b) Maximum production of wheat in the world
- (c) Maximum production of coffee in the world
- (d) Maximum production of tea in the world

(e) Maximum production of jute in the world



Kendriya vidyalaya, Porbandar
Holiday home work
October 2023
Science

1. Animal plays crucial role for human existence elaborate the answer
2. Friction is necessary evil justify this statement.
3. How can we prepare the manure. what are the role of animal in this type of manure.
4. Write the role of technology in agriculture sector. How they simplify the work for farmers.
5. Farmers are real heroes a country
Justify this statement.
6. Pandemic are the real and morden issue for world. How we can prevent it. what should the step taken in regular life
7. What is the organism which helps the human for easy survival.
8. Write the role of petroleum in transportation and electricity generation also sit right how we can reduce the uses of petroleum in these two particular areas.

ENGLISH

Class VIII

HOLIDAY HOME WORK

Q1) Revise all the chapters and poems done till now.

Q2) write a letter to your friend explaining how Tilly recognized and saved life of many people using her skills. (-100-120 words)

Q3) Write a diary entry in 100 to 120 words. about the experiment you did on ants and their behavior.

Q4) Create Story/poem of your own with a (150-200 words] interesting moral.

केन्द्रीय विद्यालय पोरबंदर
शरद-अवकाशकालीन गृहकार्य -2023-224

कक्षा : VIII

विषय : हिंदी

1. अर्धवार्षिक परीक्षा प्रश्नपत्र हल कीजिए ।
2. निम्नलिखित विषयों पर अनुच्छेद लिखिए
 - 1 . अनुशासन और विद्यार्थी जीवन
 2. दशहरा
3. पत्र लिखिए ।
 - 2 . खेल का सामान मंगवाने हेतु विद्यालय प्राचार्य को एक प्रार्थना पत्र लिखिए-
- 4 संवाद लिखिए
 - 1 गृहकार्य नहीं करने पर अध्यापिका और विद्यार्थी के बीच संवाद

शरदकालीन-अवकाशस्य गृहकार्यम् (2023-24)

विषयः-संस्कृतम्

कक्षा-8

1) पठ्, धाव्, लिख् इति धातूनां धातुरूपाणि लट् लकारे लेखनम् ।

2) बालक, भानु एवं कवि शब्दानां शब्दरूपाणि लिखत ।

नोट- गृहकार्यं केवल अभ्यासपुस्तिका में ही करना है ।

विषयाध्यापकः -संजय कुमार सैन

Autumn Break Home Work(2023-24)

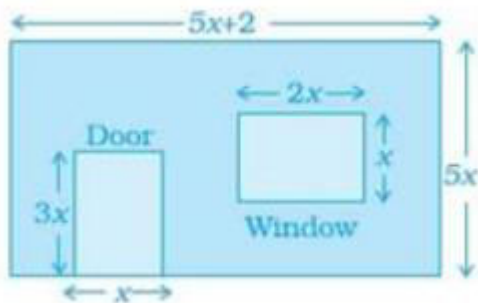
Subject- Mathematics

Class- VIII

1. Resolve question paper of Mid Term along with complete solution and explanation.
2. Learn tables upto 20 .

CCT

The figure shows the dimension of a wall having a window and a door of a room .Write an algebraic expression for the area of the wall to be painted.



Class- VII

1. Resolve question paper of Mid Term along with complete solution and explanation.
2. Learn tables upto 20 .

CCT

Once a mathematics teacher took a class test of 17 students, out of which 5 students got good marks as a result teacher bought a dairy milk silk chocolate for them as a reward. The teacher gave $\frac{5}{12}$ part to the 1st student, $\frac{1}{4}$ to the 2nd student, $\frac{1}{6}$ part to the 3rd student, $\frac{1}{12}$ to the 4th student and the remaining chocolate to the 5th student, then



∴-

1. Which student got the most chocolate?
2. Which student got the least chocolate?
3. How much chocolate did the 5th student get? Is the distribution done by teacher justified.
4. Did 5th student get chocolate's part in a rational number form. Justify your answer.

CLASS X

1. Solve two sample papers.

LAB. ACTIVITY

To verify experimentally that the tangent at any point to a circle is perpendicular to the radius through that point.

CLASS IX

1. Resolve question paper of PT2 along with complete solution and explanation.

LAB. ACTIVITY

To verify exterior angle property of a triangle.

To verify the algebraic identity : $(a + b)^2 = a^2 + 2ab + b^2$